

April 24, 2014

# MWH Presentation to AIDEA Board of Directors



**MWH**<sup>®</sup>

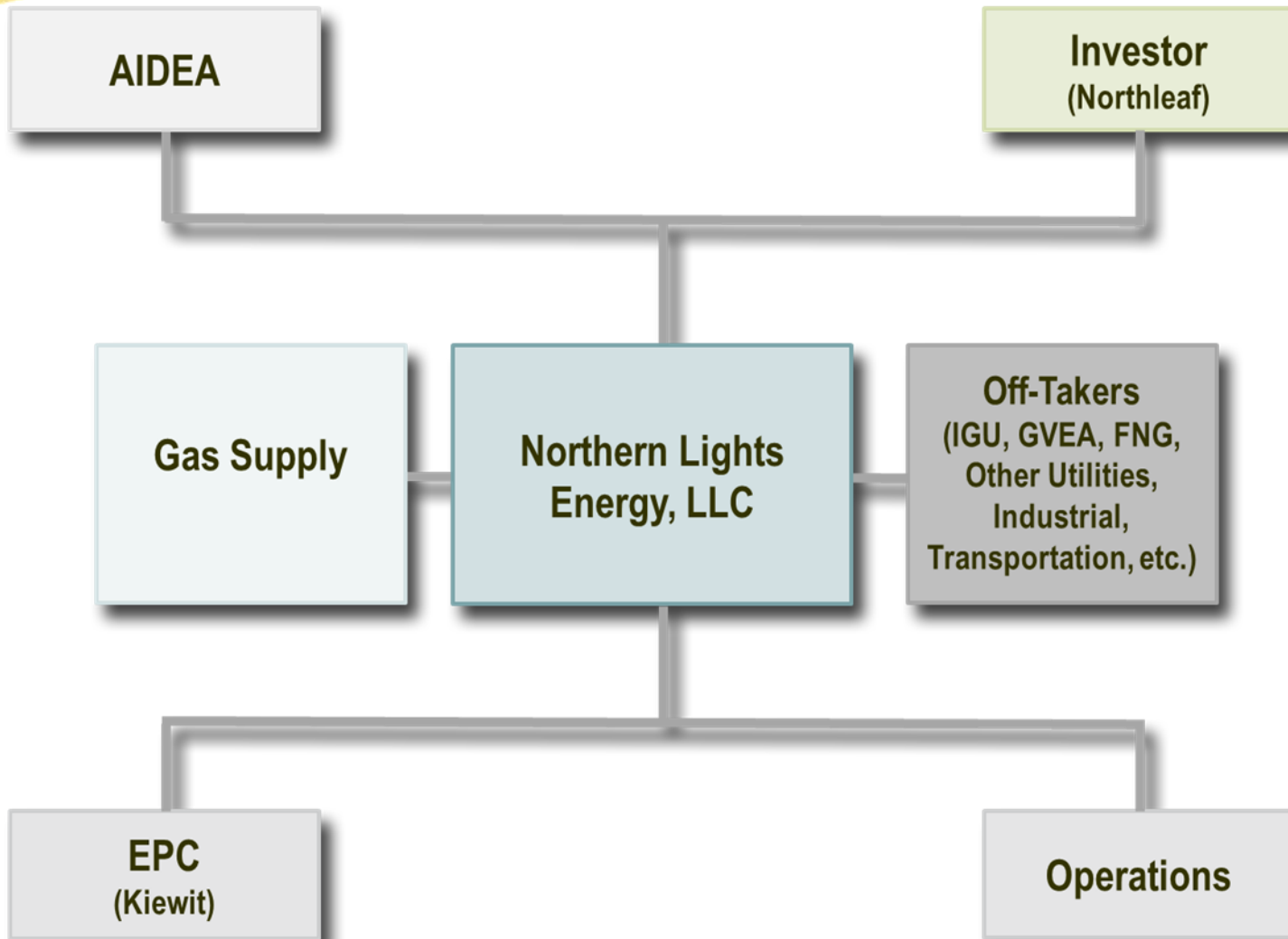
***BUILDING A BETTER WORLD***

# Topics

- IEP Integration
  - Project Structure
  - System Modeling and Optimization
- Critical Path Schedule
  - Commercial & Financial Updates
  - Early Works Update
  - EPC & Operations Contracting Update



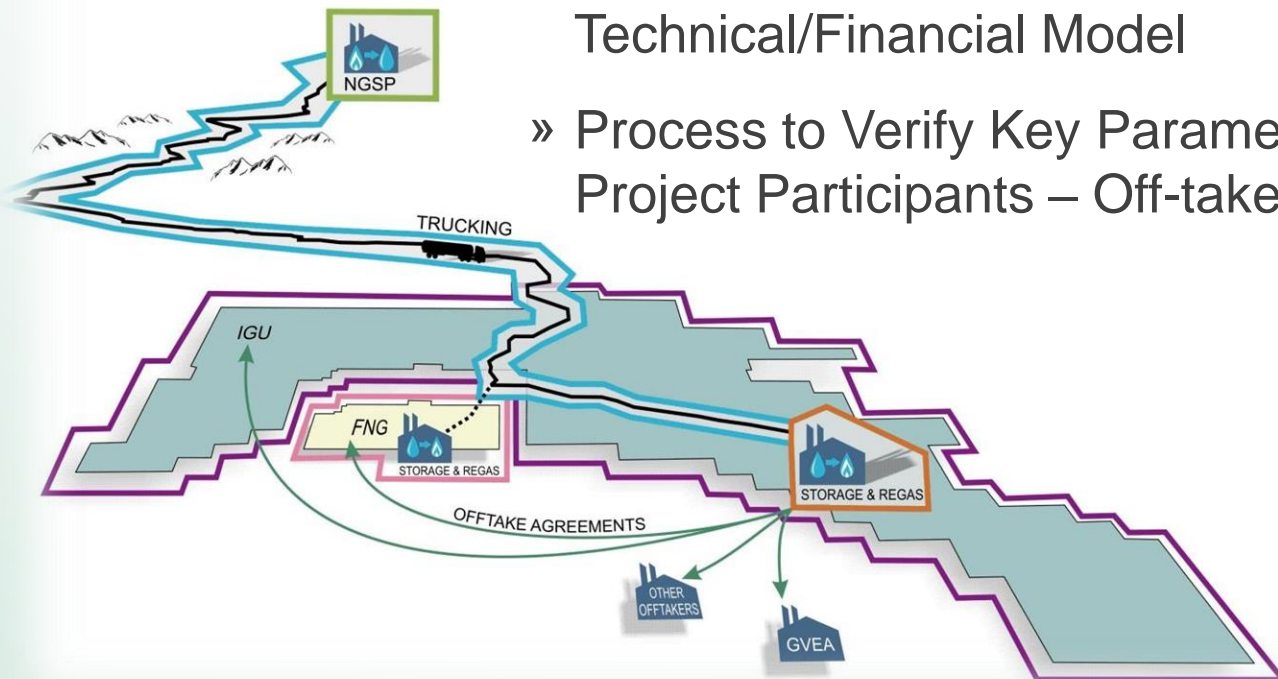
# The Interior Energy Project



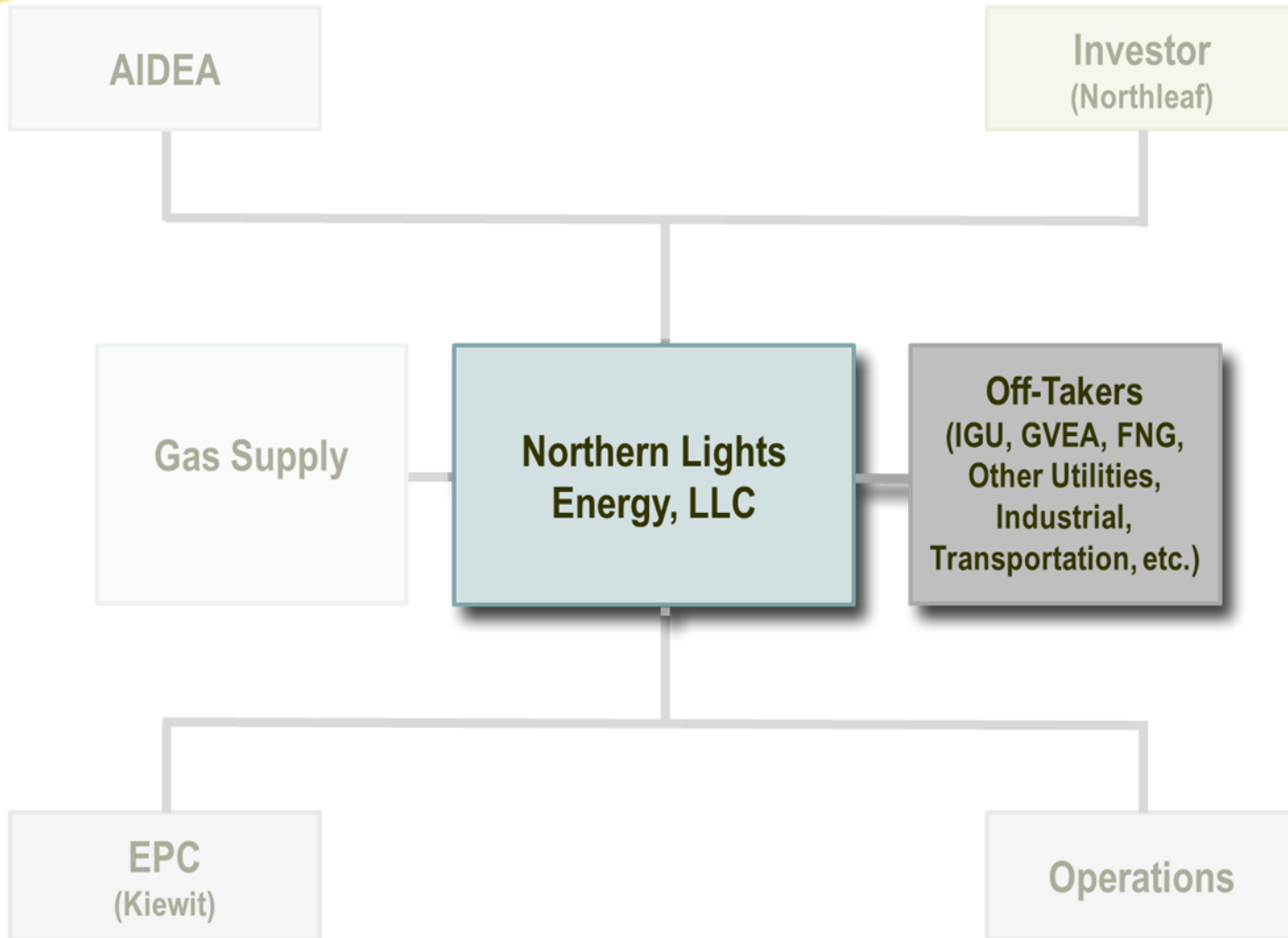
# IEP Integrated System Optimization: Value for the Interior Communities

**Goal:** To develop an integrated plan that optimizes the LNG Plant, Transportation, Storage & Distribution to define the project's technical solution and economic balance.

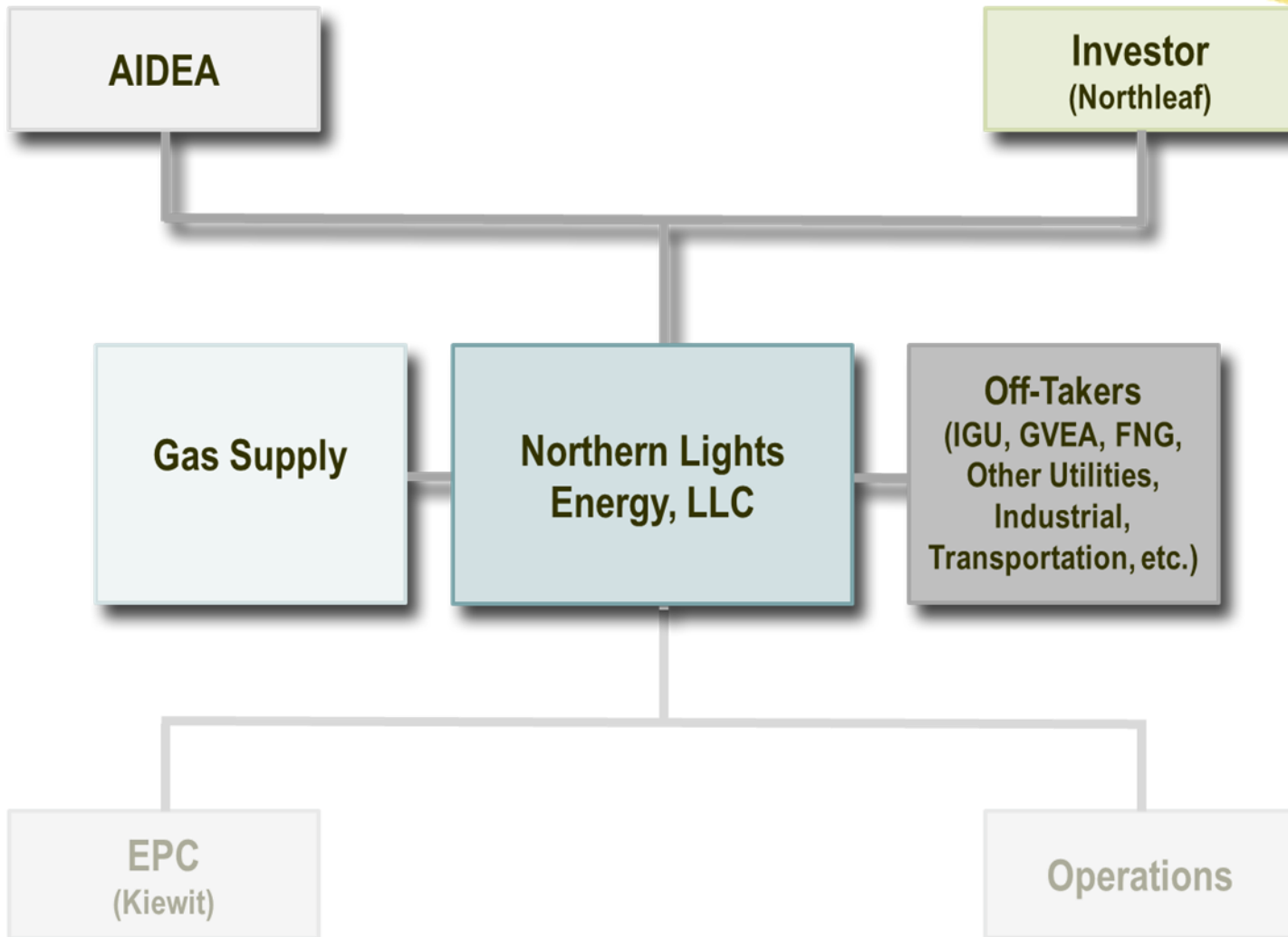
- » IEP Integration Technical Working Group
- » Collaborative Development of a System Technical/Financial Model
- » Process to Verify Key Parameters through Work with Project Participants – Off-takers, Storage, Trucking



# Foundation for LNG Production: Demand

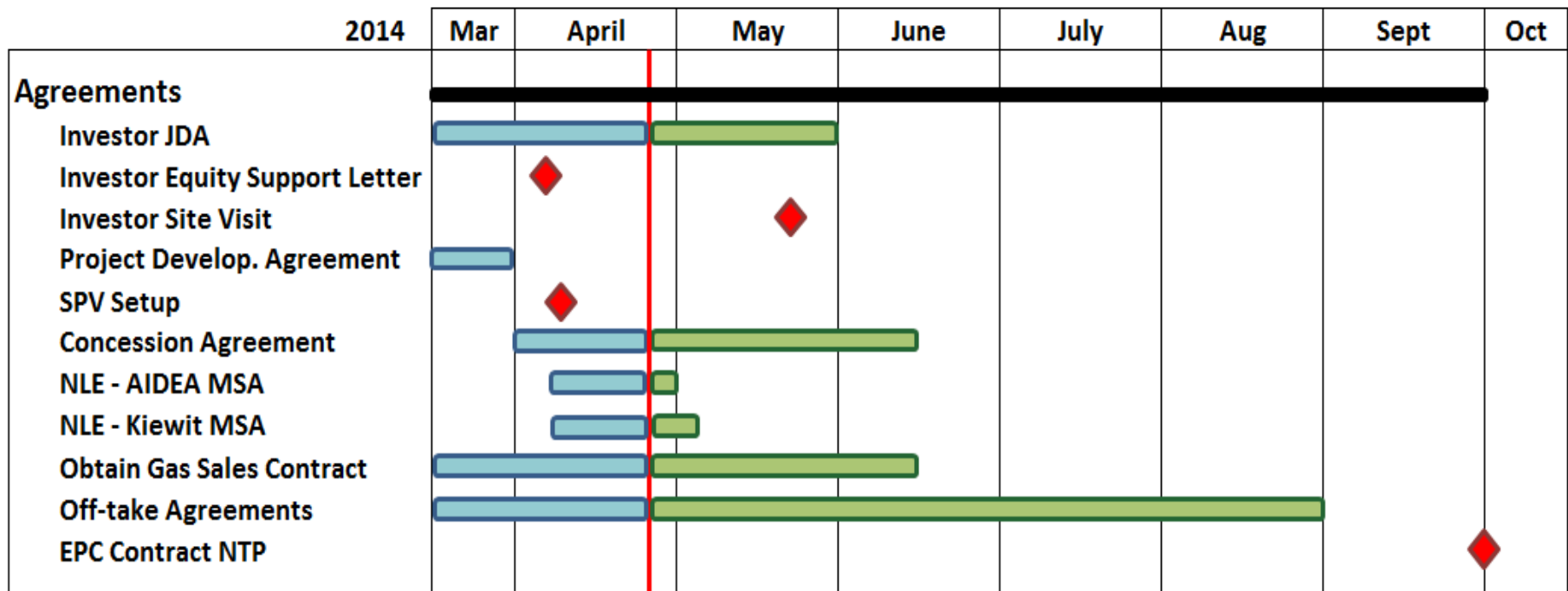


# Commercial and Financial Updates

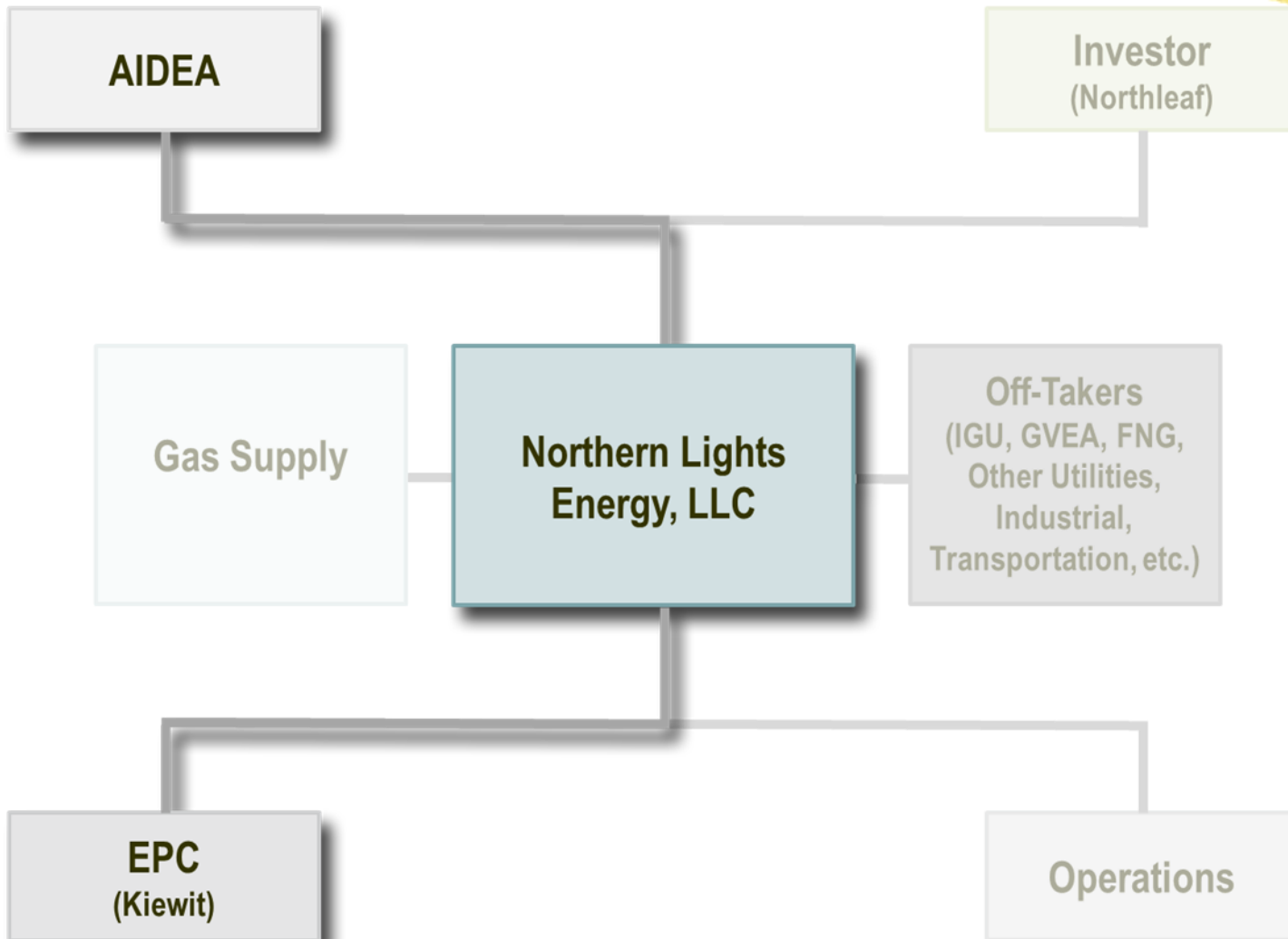


# Critical Path Schedule – Commercial Agreements

## *Driving Toward Financial Close*

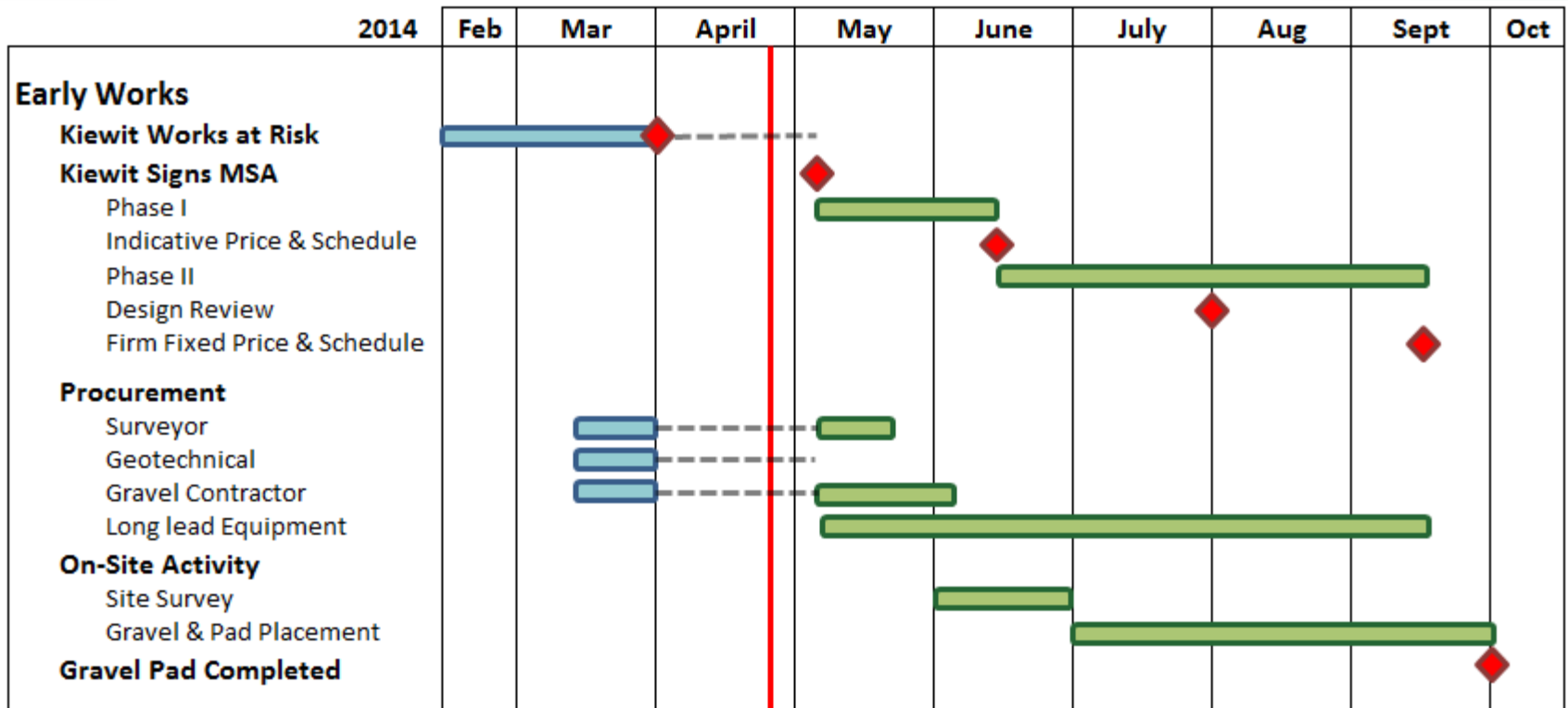


# Early Works Update

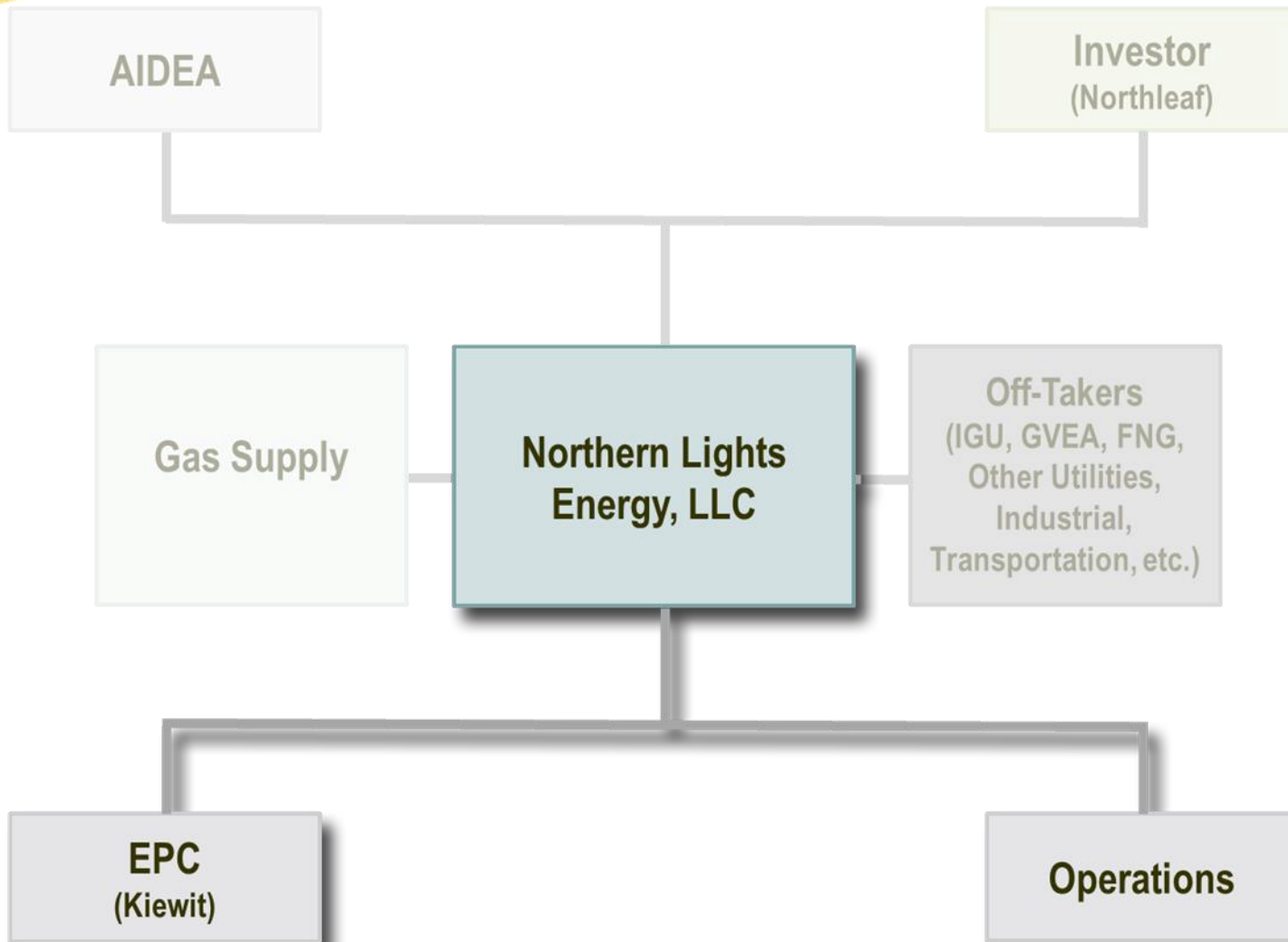




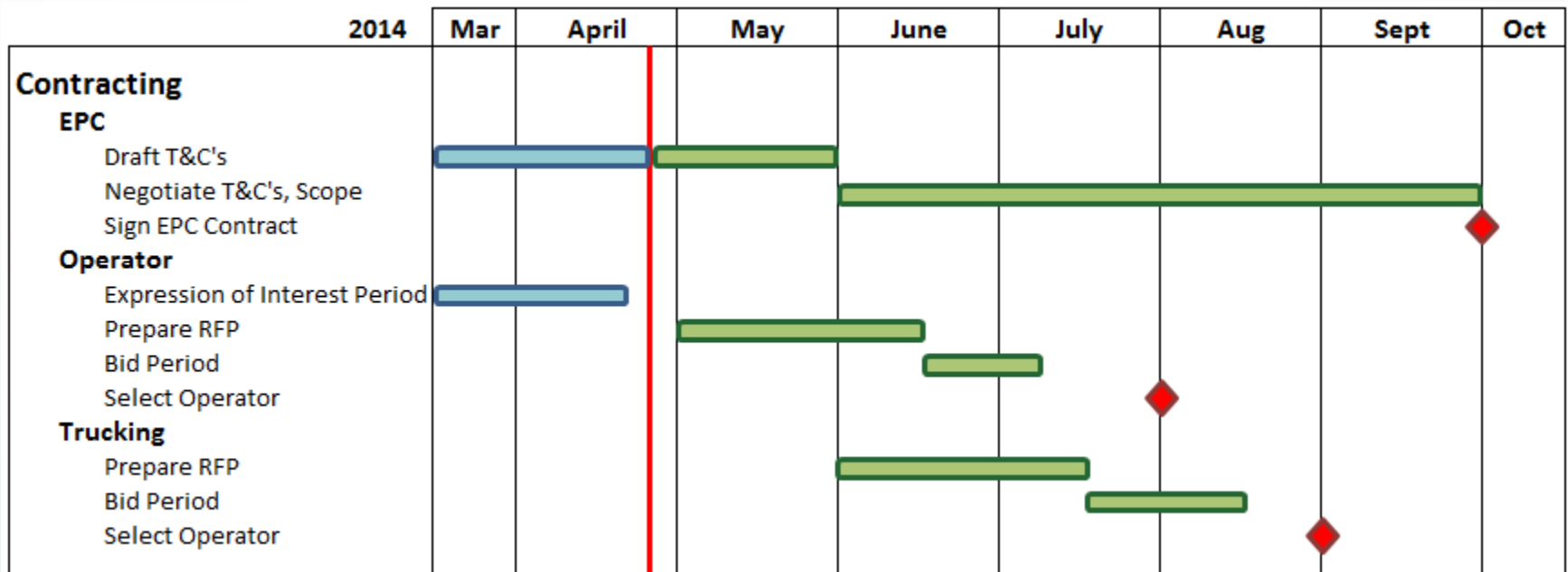
# Critical Path Schedule – Early Works



# EPC & Operations Contracting Update



# Critical Path Schedule -- Contracting



April 24, 2014

# Thank You

**Rick Adcock**

VP, Managing Director, MWH Infrastructure Development, Inc.

**Chris Brown**

VP, Alaska Regional Manager, MWH Americas, Inc.

**Jim Kuiken**

Chief Corporate Officer, MWH Global, Inc.

**Cory Borgeson**

President & CEO, Golden Valley Electric Association



**MWH**<sup>®</sup>

*BUILDING A BETTER WORLD*